
1

2

3

50-100

4

5

8

50%

36

6

..... - 5 -

..... - 5 -

..... - 5 -

..... - 5 -

..... - 6 -

..... - 7 -

..... - 8 -

..... - 8 -

..... - 9 -

..... - 9 -

..... - 9 -

..... - 10 -

..... - 11 -

..... - 11 -

..... - 11 -

..... - 11 -

..... - 12 -

..... - 14 -

..... - 14 -

..... - 16 -

..... - 21 -0

..... - 21

21

..... - 22 -

..... - 22 -

..... - 24 -

..... - 24 -

..... - 25 -

..... - 29 -

..... - 29 -

..... - 32 -

..... - 32 -

..... - 34 -

..... - 35 -

..... - 36 -

..... - 38 -



-
-
-
-
-
-

1

2

3

4

5

6

7

8

9

10

11

12

13

1

2

3

4

5

6

7

8

1.

2

3

4

5

6

7

8

9

10

11

12

1

2

3

4

5

6

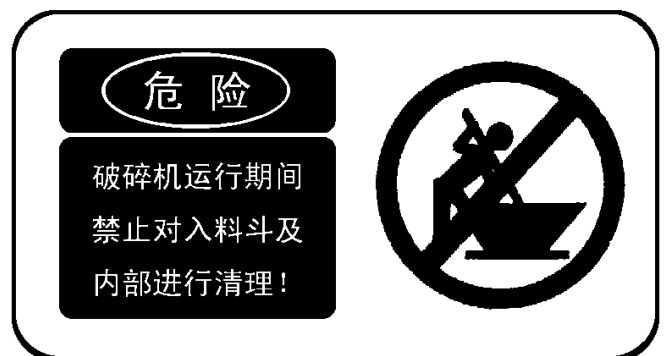
7

8

1



2



CF

800mm

150MPa

$\frac{1}{2}$

$\frac{1}{2}$

(1).

(2).

(3).

(4).

150MPa

10%

80%

(5).

.

1

.

CF



93 dB



.

1.

;

2.

,

3.

4.

5.

4

6

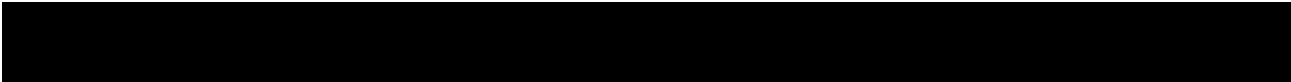
7

CF

8.

9.

41 " "



.

1.

1.1

1.2

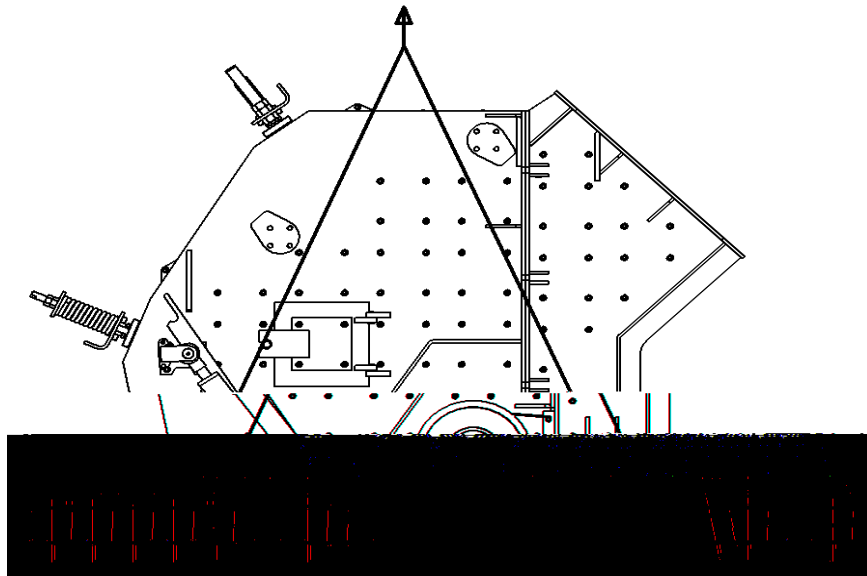
1.3.

2

2.1 3

2.2

2.3



3

3

3.1

3.2

2mm

3.3

1/2 L

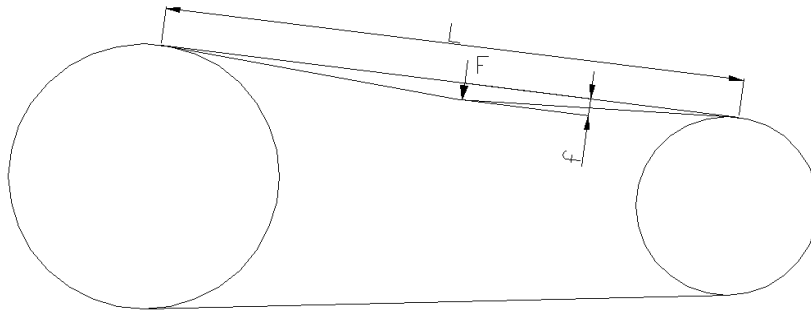
f =

1.6 x L

F

4

		F	
		1.6	N
SPC [25N(8V)]	224 355	60	90
	375 560	90	120



4

3.4

3.5

4.

4.1

300mm

1000mm

4.2

4.3

5

5.1

2m

5.2

5.3

5.4

1

1.1

1.2

1.3

1.4

380

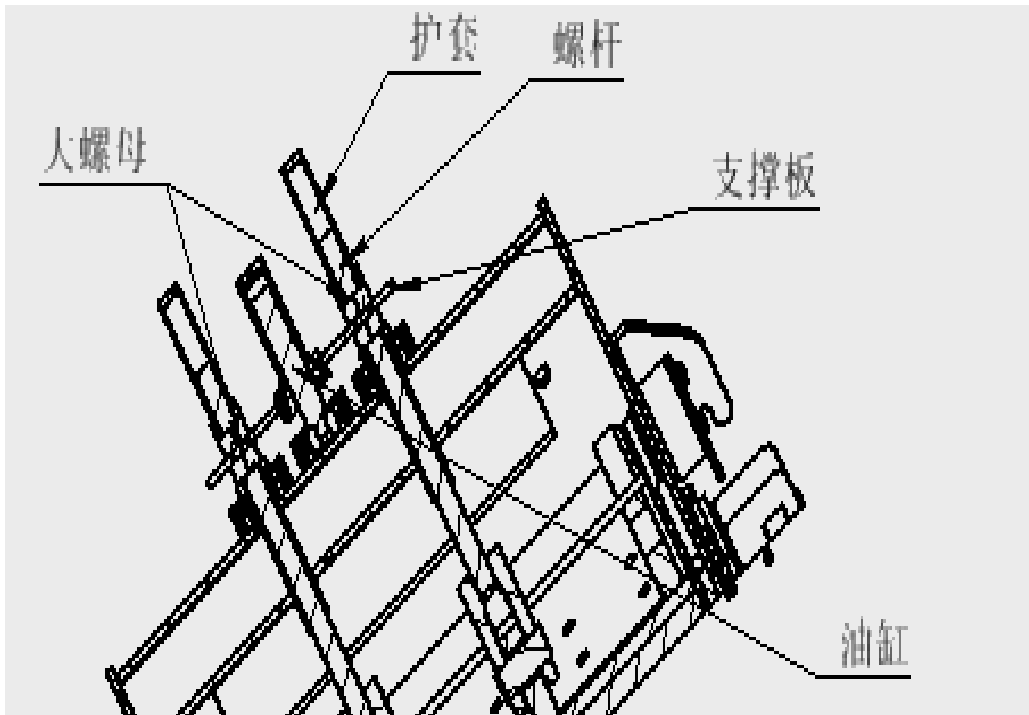
1.5

1.6

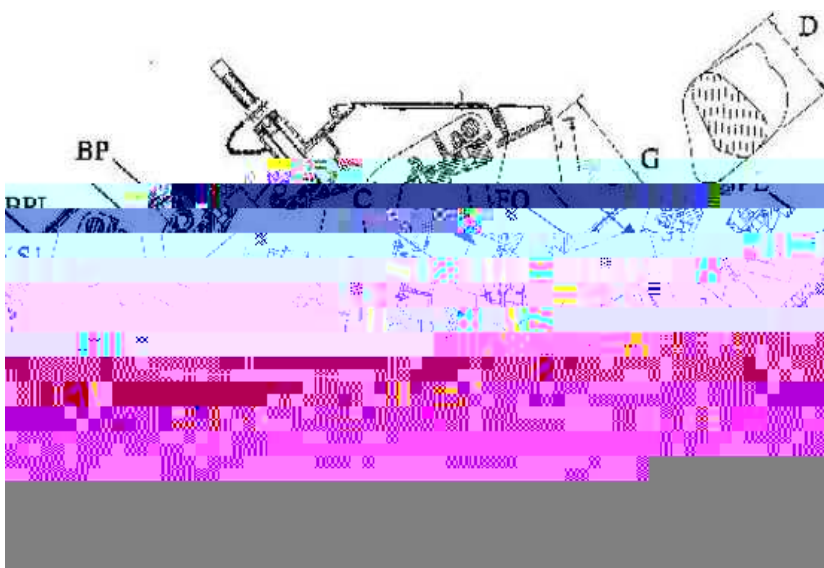
2.

6 S1

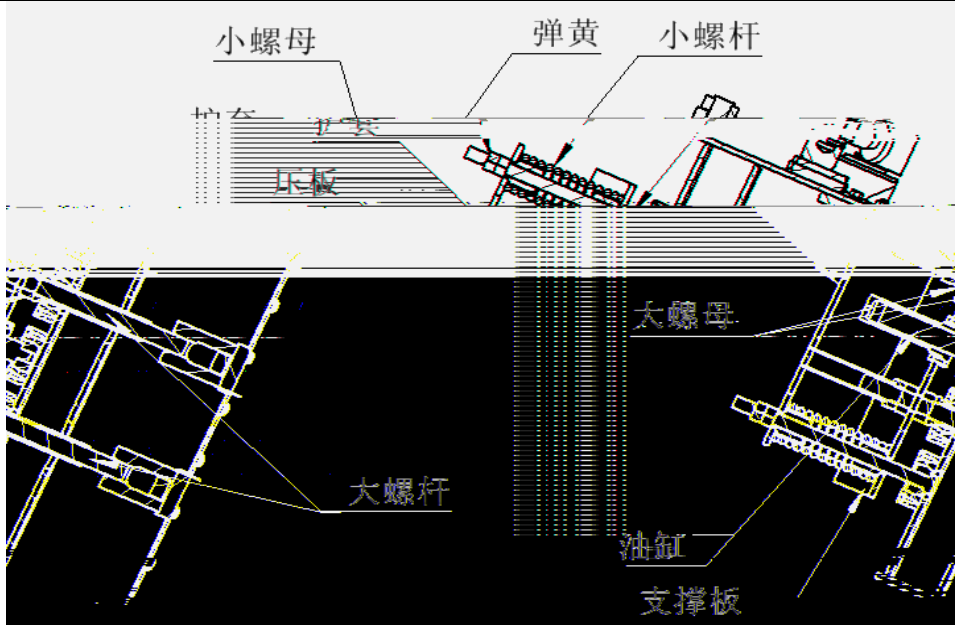
5 6



5



6



7

4.1 S2

4.1.1

4.1.2

S2

4.1.3

S2

4.1.4

4.1.5

, S2

4.2 S2

4.2.1

4.2.2

4.2.3

S2

4.2.4 S2

S2

4.

4.1 7

4.2

4.3

1. 8 16
4

2.

7



8

9

10

11

12

1

13

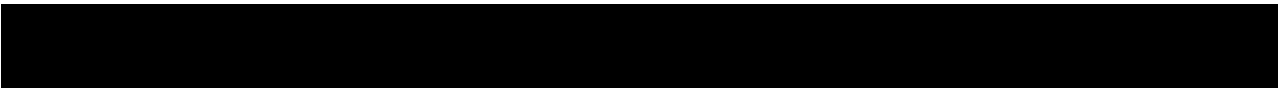
8

14

100

. (HP-R
CF250 90 / CF400 120 /)

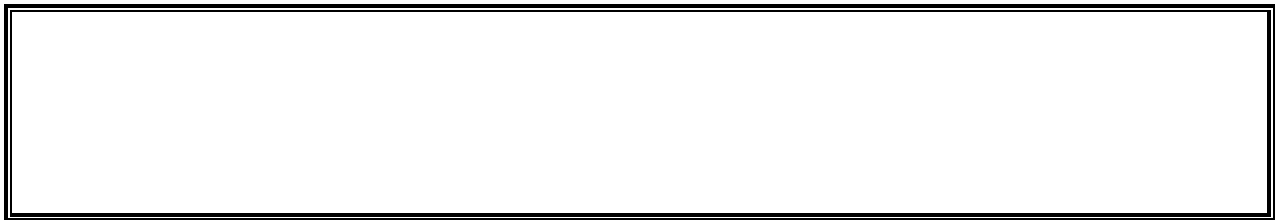
15



CF

8-10

- 1
- 2
- 3
- 4
- 5.



1

50~100Mpa 50~72 100~150Mpa
30~48
1/2
2/3

2

46# 68#

3

50
50~100

4

1

2

3

4

5

1.

,

,

2

,

,

,

3 , , ,

4 , , ,

5. ,

6 (ZL-3)

1000 ;4 3000 ;6 4000 ;8 10 ,7000 .

1/2 2/3

7 , ,

8 , ,

, ,

()

Shanghai Hengyuan Metallurgy (Mine) Equipment Co., Ltd.

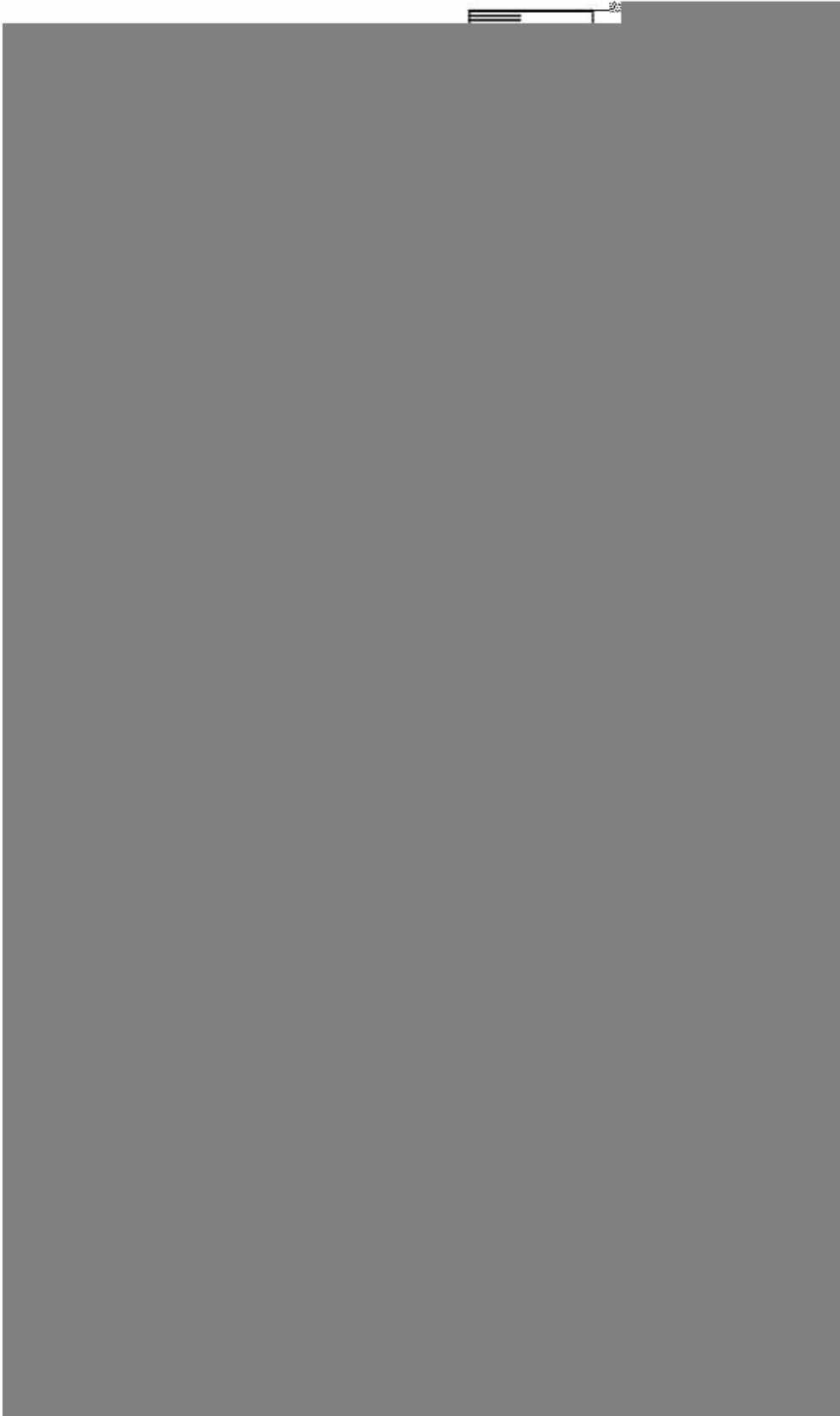
		,
		.
		.
		.
		, , ,
		.
		,
		.
		, , .
		.
		.
		, .
		.
		,
		, .
		, .
		, , ,
		.
		, .

		MJZ—SM	
		4	1
1			

		1
3		
	1	1
	1	1
	1	1
	1	1
4		
	1	1
	1	1
	1	1
	2	2
	2	2
5		
		2

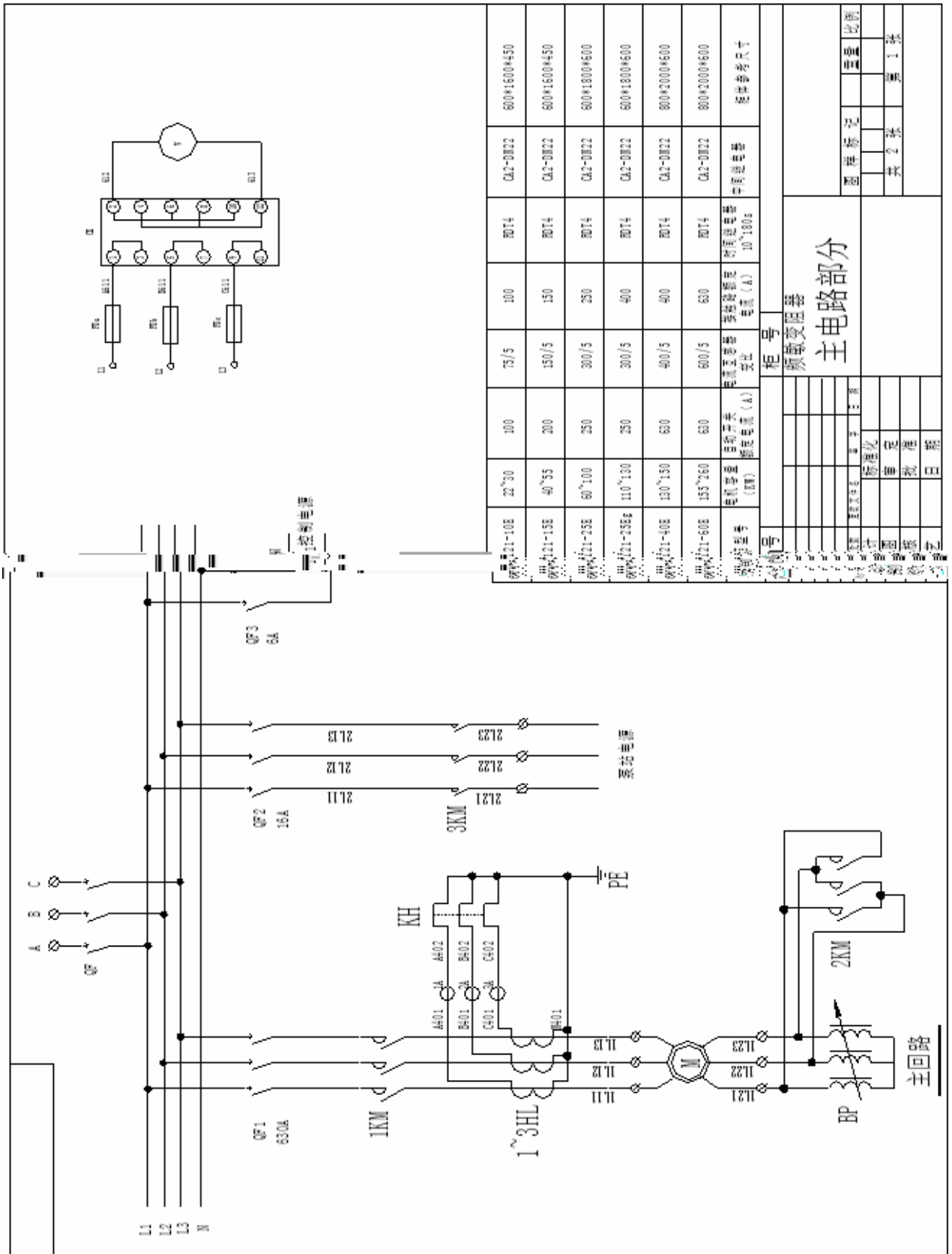


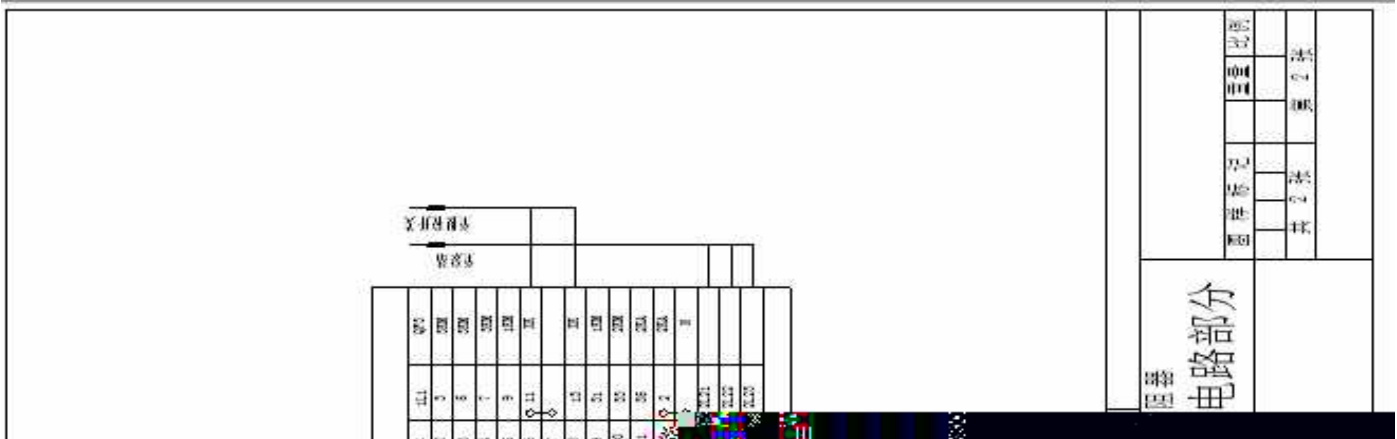
1. CF250/CF250C



2. CF400/CF400C



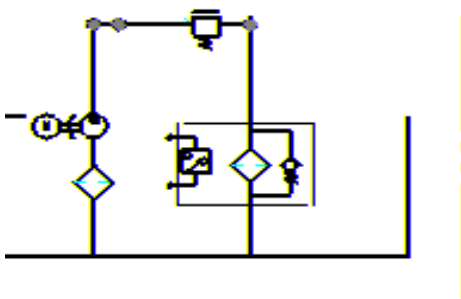
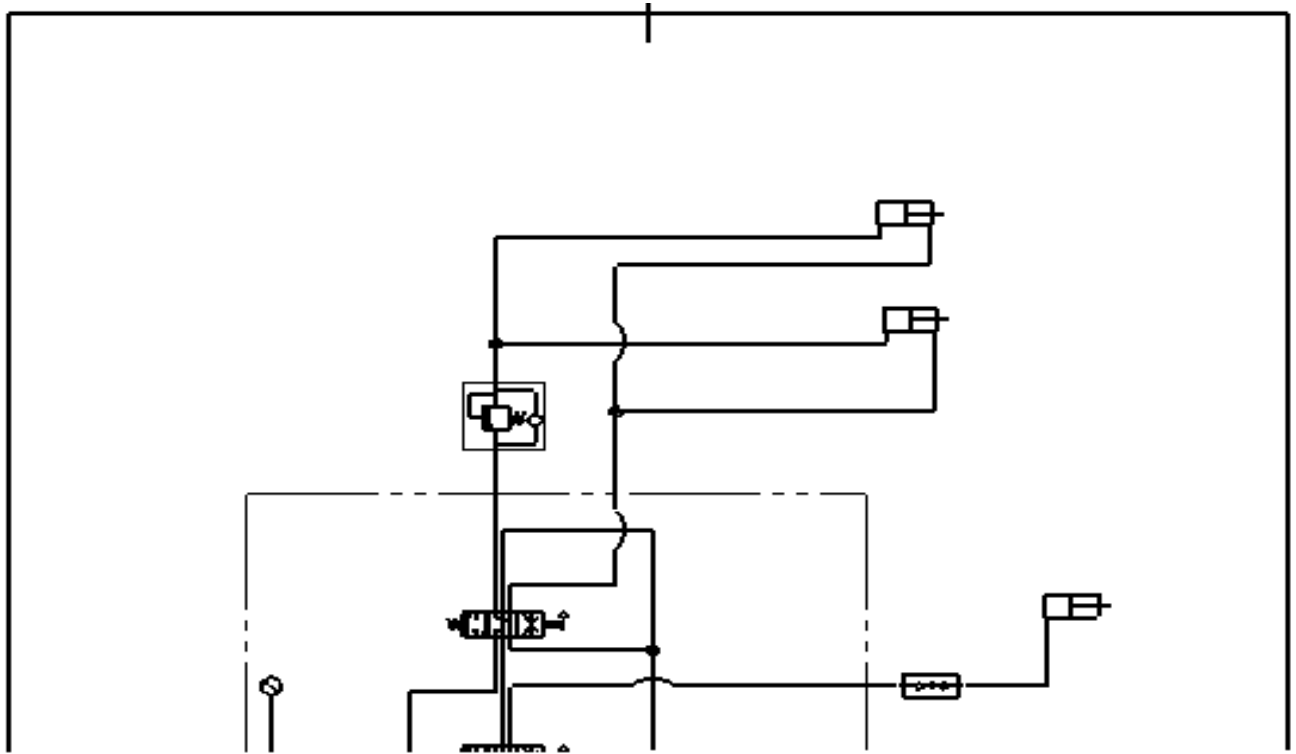




1.			QF		QF1		QF2			
		QF3			1KM	2KM		BP		
			3KM							
2.										
2	1				XK			QF		
		QF1	QF3	S12		HG		SB21		
		1KM		M		BP				
			1KT	1KT		90	2KT	2KT		
			1KT	5~10	1KT	1KA	2KM			
		BP		M			2KM	2KT		
		2KT		HG		HR		time		
2	2		SS21	1KM	1KT	1KA	2KM	M		
			S11							
2	3			2KT	2KA		1KM	1KT	2KT	
			1KT		2KT		5~10			
		1KT			2KM			BP		
		2KT		2KA		2KA	13	15	1KM	
					BP			2KA	7	35
		YF								

3.

		QF1	QF2	S12
	3KM			
XK			XK	



技术参数

1. 泵站工作压力: 10MPa.
2. 泵站油泵排量: 10ml/min.
3. 泵站过滤精度: 10um.

液压系统

制表人	年、月、日				标记	卷数	分区
图例	标记	位置	比例		设计		审核
			1:1		审核		
共	张	第	张		工艺		批准

